



PROFICIENT™
Audio Systems
OWNER'S MANUAL

IWS10
Passive In-Wall Sub



SAFETY INSTRUCTIONS

	CAUTION RISK OF ELECTRIC SHOCK DO NOT OPEN	
CAUTION: To reduce the risk of electric shock, do not remove cover (or back). No user-serviceable parts inside. Refer servicing to qualified service personnel.		

• Explanation of Graphical Symbols



The lightning flash with arrowhead symbol, within an equilateral triangle, is intended to alert you to the presence of uninsulated "dangerous voltage" within the product's enclosure that may be of sufficient magnitude to constitute a risk of electric shock to persons.



The exclamation point within an equilateral triangle is intended to alert you to the presence of important operating and maintenance (servicing) instructions in the literature accompanying the appliance.

- 1. Read Instructions:** All the safety and operating instructions should be read before the appliance is operated.
- 2. Retain Instructions:** The safety and operating instructions should be retained for future reference.
- 3. Heed Warnings:** All warnings on the appliance and in the operating instructions should be adhered to.
- 4. Follow Instructions:** All operating and other instructions should be followed.
- 5. Water and Moisture:** The appliance should not be used near water – for example, near a bathtub, washbowl, kitchen sink, laundry tub, in a wet basement, or near a swimming pool, etc.
- 6. Carts and Stands:** The appliance should be used only with a cart or stand that is recommended by the manufacturer.

PORTABLE CART WARNING



- 7. Wall or Ceiling Mounting:** The appliance should be mounted to a wall or ceiling only as recommended by the manufacturer.
- 8. Ventilation:** The appliance should be situated so that its location or position does not interfere with its proper ventilation. For example, the appliance should not be situated on a bed, sofa, rug, or similar surface that may block the ventilation openings; or placed in a built-in installation, such as a bookcase or cabinet that may impede the flow of air through the ventilation openings.

APPLICABLE FOR USA, CANADA OR WHERE APPROVED FOR USAGE

CAUTION: TO PREVENT ELECTRIC SHOCK, MATCH WIDE BLADE PLUG TO WIDE SLOT, INSERT FULLY.

ATTENTION: POUR EVITER LES CHOCS ELECTRIQUES, INTRODUIRE LA LAME LA PLUS LARGE DE LA FICHE DANS LA BORNE CORRESPONDANTE DE LA PRISE ET POUSSER JUSQU'AU FOND.

- 9. Heat:** The appliance should be situated away from heat sources such as radiators, stoves, or other appliances that produce heat.
- 10. Power Source:** The appliance should be connected to a power supply only of the type described in the operating instructions or as marked on the appliance.
- 11. Power-Cord Protection:** Power-supply cords should be routed so that they are not likely to be walked on or pinched by items placed upon or against them, paying particular attention to cords at plugs, convenience receptacles, and the point where they exit from the appliance.
- 12. Cleaning:** The appliance should be cleaned only as recommended by the manufacturer.
- 13. Nonuse Periods:** The power cord of the appliance should be unplugged from the outlet when left unused for a long period of time.
- 14. Object and Liquid Entry:** Care should be taken so that objects do not fall into and liquids not spilled into the inside of the appliance.
- 15. Damage Requiring Service:** The appliance should be serviced by qualified service personnel when:
 - a. The power-supply cord or the plug has been damaged; or
 - b. Objects have fallen onto, or liquid has been spilled into the appliance; or
 - c. The appliance has been exposed to rain; or
 - d. The appliance does not appear to operate normally or exhibits a marked change in performance; or
 - e. The appliance has been dropped, or the cabinet damaged.
- 16. Servicing:** The user should not attempt to service the appliance beyond those means described in the operating instructions. All other servicing should be referred to qualified service personnel.
- 17. Grounding or Polarization:** The precautions that should be taken so that the grounding or polarization means of an appliance is not defeated.

INSTALLATION CONSIDERATIONS

Proficient's IWS10 In-Wall Subwoofer is designed to maximize the listening experience in a home theater or distributed audio system. Reading this manual will help you understand the importance of placement and crossover calibration, that the optimal balance of volume, frequency response and dispersion can be achieved.

Placing the IWS10 within 3 feet of a corner in the room will result in increased bass output at frequencies that may be desirable for home theater use. Placement beyond that point will result in smoother, more even bass performance, which is more suitable for music. Ultimately, the best placement of the IWS10 subwoofer is one that allows it to produce a neutral, uncolored sound.

The IWS10 is conservatively rated at 250 watts of power handling, the frequency response 36Hz to 150Hz. (A 250-watt amplifier with installer-adjustable crossover is coming from Proficient; dealers will receive product information as it's made available.)

It's important that a quality amplifier-crossover combination be used for precise detail and a smooth transition from the low frequencies of the other speakers down into the sub-bass range. As a Proficient installer, you'll be able to preset the crossover for just the right pass point.

When connecting the IWS10 to the LFE or subwoofer out of an A/V receiver, follow the receiver manufacturer's instructions for crossover adjustment. The size of the woofers in the system's front left and right speakers will dictate the choice of the best crossover point in the receiver. The larger the woofers, the lower the adjustment. When making the adjustment, it's best to listen either to music you're familiar with or the test tones from the receiver. However, in some receivers the selection of certain surround modes automatically switches the crossover to a default point.

INSTALLATION – NEW CONSTRUCTION / UNFINISHED WALLS

Installation of the IWS10 into New Construction applications requires the use of Proficient’s BB-IWS10 MDF Back Box. Please refer to the instructions included with the BB-IWS10 for further details.

INSTALLATION – FINISHED WALLS

Please refer to **Diagram 1** for a quick installation overview, which will be described below:

1. CUTTING THE DRYWALL

Find the studs in the wall using a good stud finder. Locate the exact center between the studs by drilling a small hole as close to center as can be determined. Using a stiff wire (a coat hanger works well) bent to 90° feel for both studs through the hole. By turning the wire around you should be able to determine the middle location between the studs.

Once the center has been determined, use the cut-out template supplied with the IWS10 to mark and cut out the hole in the drywall.

2. WIRING

Connect the speaker wire to the IWS10, be sure to connect the positive wire to the terminal marked (+) and the negative wire to the terminal marked (-). **Note:** Make sure the binding posts (wire connectors) are tightened firmly or they may rattle. The other end of the wire should be connected in the same manner to your amplifier’s inputs marked “SUBWOOFER OUT”. Make sure that the amplifier is unplugged when connecting any wires or cables to it.

3. MOUNTING THE IWS10

The IWS10 and its attached baffle have been specifically designed to mount to the drywall. Place the sub into the drywall cut-out and position it. As you tighten the screws, the mounting feet turn and clamp the baffle to the drywall. See **Diagram 2**. **CAUTION: Be careful not to overtighten the screws or the baffle will warp, and the mounting feet may break off.**

Once the baffle is in place, you can gently push the grille into the slot on the baffle. Due to the nature of the system, the grille is designed to fit very tightly.

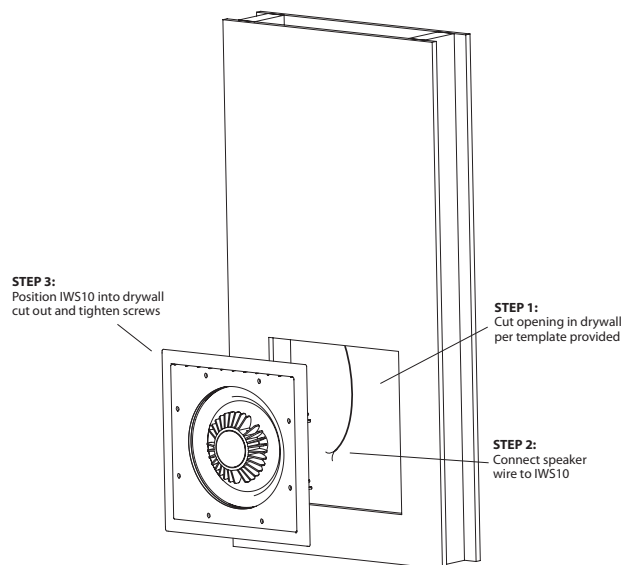


Diagram 1

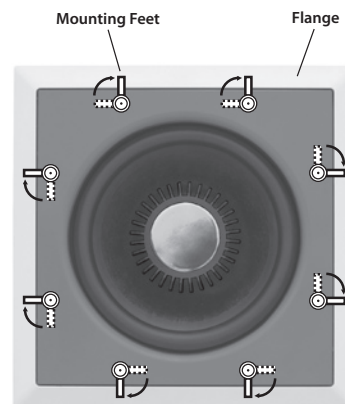


Diagram 2

TROUBLESHOOTING

The IWS10 In-Wall Subwoofer is designed to function trouble-free. Most problems occur because of operating errors. If you have a problem, please check the troubleshooting list first. If the problem persists, contact Tech Support at 800.448.0876 or e-mail us at techsupport@proficientaudio.com.

The Problem	Possible Causes and Solutions
No sound is heard.	<p>Audio cable to the amplifier is not connected properly or the cable is bad. Use another cable that you know is good.</p> <p>Check all speaker wire connections and plugs.</p> <p>Volume Limit on amp may be set too low.</p>
A hum or buzzing sound is heard.	<p>The sound may be caused by a ground loop in the system. Try to eliminate this by reversing the AC plugs of other components in the system.</p> <p>Try plugging the amplifier into another outlet.</p> <p>Other causes may include faulty cables.</p>

SUBWOOFER SPECIFICATIONS

IWS10

Speaker Type:	Passive In-Wall Subwoofer
Woofers:	Long Excursion, 10" Treated Paper Cone Woofer with Inverted Neodymium Magnet Structure
Impedance:	4 Ω
Sensitivity:	87dB 1W/1m
Frequency Response:	36Hz - 150Hz
Power Handling:	250 watts
Baffle Dimensions (H x W):	13 $\frac{5}{8}$ " x 13 $\frac{5}{8}$ "
Wall Cut Out (H x W):	12 $\frac{1}{6}$ " x 12 $\frac{1}{6}$ "

Features and specifications are subject to change without notice.

LIMITED TEN-YEAR WARRANTY

Proficient Audio Systems warrants to the original retail purchaser **only** that this product will be free from defects in materials and workmanship for a period of ten years, provided the speaker was purchased from a Proficient Audio Systems Authorized Dealer.

Defective products must be shipped, prepaid and insured, together with proof of purchase, to the Proficient Audio Systems Authorized Dealer from whom they were purchased, or to Proficient Audio Systems at the address listed on this installation instruction manual. Freight collect shipments will be refused. It is preferable to ship this product in the original shipping container to lessen the chance of transit damage. In any case, the risk of loss or damage in transit is to be borne by the purchaser.

If, upon examination at the Factory or Proficient Audio Systems Authorized Dealer, it is determined that the unit was defective in materials or workmanship at any time during this warranty period, Proficient Audio Systems or the Proficient Audio Systems Authorized Dealer will, at its option, repair or replace this product at no additional charge, except as set forth below. If this model is no longer available and can not be repaired effectively, Proficient Audio Systems, at its sole option, may replace the unit with a current model of equal or greater value. In some cases where a new model is substituted, a modification to the mounting surface may be required. If mounting surface modification is required, Proficient Audio Systems assumes no responsibility or liability for such modification. All replaced parts and product become the property of Proficient Audio Systems. Products replaced or repaired under this Warranty will be returned to the original retail purchaser, within a reasonable time, freight prepaid.

For technical inquiries please call 877.888.9004 or email us at techsupport@proficientaudio.com. We are available to assist you every weekday, except holidays, between the hours of 7:00 a.m. and 5:00 p.m. PST.

This Warranty does not include service or parts to repair damage caused by accident, disaster, misuse, abuse, negligence, inadequate packing or shipping procedures, commercial use, voltage inputs in excess of the rated maximum of the unit, or service, repair or modification of the product which has not been authorized or approved by Proficient Audio Systems. This Warranty also excludes normal cosmetic deterioration caused by environmental conditions. This warranty will be void if the Serial Number on the product has been removed, tampered with or defaced.

This Warranty is in lieu of all other expressed warranties. If the product is defective in materials or workmanship as warranted above, the purchaser's sole remedy shall be repair or replacement as provided above. In no event will Proficient Audio Systems be liable for any incidental or consequential damages arising out of the use or inability to use the product, even if Proficient Audio Systems, or a Proficient Audio Systems Authorized Dealer has been advised of the possibility of such damages, or for any claim by any other party. Some states do not allow the exclusion or limitation of consequential damages, so the above limitation and exclusion may not apply.

All implied warranties on the product are limited to the duration of this expressed Warranty. Some states do not allow limitation on the length of an implied warranty. If the original retail purchaser resides in such a state, this limitation does not apply.



940 Columbia Avenue, Riverside, CA 92507
877.888.9004 • Fax 951.787.8747 • proficientaudio.com